

Medical Electric Saw Autopsy Saw

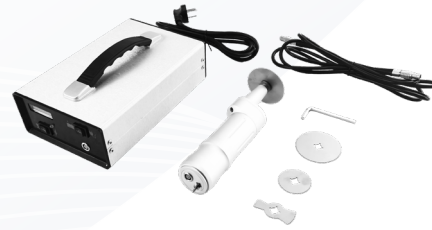
S-780



Features

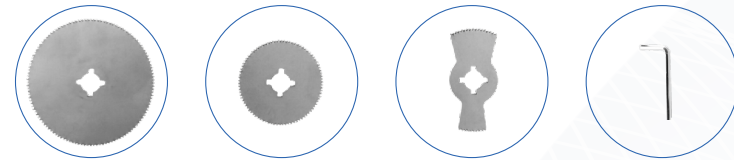
- No damage to cartilage tissue, no splashing during cutting, and it has very strong cutting force on hard substance with plasticity, it cuts very fast..
- This machine can work with both AC and DC power.
- The saw blades are made of high quality stainless steel, very durable.
- Motor with low temperature, and it doesn't burn.
- Simple and convenient in operation, safe and lightweight.

Performance & Application



Corpse dissection tool Electric Dissecting saw Autopsy Bone Saw widely used in craniotomy, spinal cord opening and osteotomy, and is the special medical power saw for dissecting room or autopsy, both indoor and outdoor.

Accessories



Packing



Aluminum case packing

Main Technical Data

Transport storage condition	Ambient temp. range	-10°C~+40°C
	Relative humidity range	≤90%
	Atmospheric pressure range	500hPa~1060hPa
Operating Conditions	Ambient temperature range	5°C~40°C
	Relative humidity range	≤70%
	Atmospheric pressure range	860hPa~1060hPa
	Charge power	100-240V : 50-60 Hz
	Host power	9.6V~-14.4V

Handpiece

Voltage	12V
Output power	120W
Oscillations	0-18000rpm
Swing angle	4°
Clamping force	≥100N

Console

Input voltage	100V~240V
Output voltage	10V-12V
Battery capacity	86.4Wh
Charging time	≈ 4h